

# HOW TO USE

## THE WOOD TYPE BIBLE

### WAYS TO SELECT YOUR TYPE

#### Browse through the pages

The type is divided first by classification (in this order: Gothic, Serif, and Display) and then alphabetically.

Each typeface in our studio is accounted for with a specimen page, which contains information about the typeface, and an actual size specimen. On each specimen page is a table that lists each line size we have the typeface in, and the condition of that case. Full circles in the squares mean the alphabet is complete. Specific letters within the squares signify which letters are missing.

#### Table of Contents

This page is an overview of what we have in the collection. It is organized by classification, then line size, and then alphabetically.

#### Collection Overview

The last page in the inventory is the Collection Overview. This table is organized by line size. It also contains the same table structure as the specimen page, however, outlined circles delineate that the alphabet is incomplete. Refer to the specimen page for specifics on which characters are missing.

TYPEFACE NAME

GOTHIC REGULAR

SPECIMEN

ABCDEFGHIJKLM  
NOPQRSTUVWXYZ  
V7 abcdefghijklmn  
opqrstuvwxyz&?!  
fffffffi

CASE STATUS  
*Circles indicate that the full alphabet is present, letters in the box indicate which characters are missing.*

CASE NO.	LINE SIZE	A-Z	a-z	123
1217	6	●		●
1239	8	●	●	
1246	10	●		●
1274	20	H J L T W Z		

*Not to scale*

HISTORY

**GOTHIC REGULAR** first shown by Leavenworth, circa 1837, in a condensed style. The heavy style of Gothic was not cast by American typefounders until very late nineteenth century.

SPECIMENS  
(ACTUAL SIZE)

ACTUAL SIZE SPECIMEN **GOTHIC REGULAR**

ABCDE ABCD ABCD  
Case 1217, 6 line      Case 1239, 8 line      Case 1246, 10 line

BCDEF  
Case 1274, 20 line

# TABLE OF CONTENTS

---

## **GOthic**

Geometric Sans Serif (5 Line) .....	2
Geometric Sans Serif (6 Line) .....	2
Geometric Sans Serif (8 Line) .....	2
Gothic (6 Line).....	4
Gothic (8 Line).....	4
Gothic (12 Line).....	4
Gothic (20 Line).....	4
Gothic 001 (8 Line) .....	8
Gothic 002 (6 Line) .....	10
Gothic 003 (6 Line) .....	12
Gothic 003 (12 Line) .....	12
Gothic 003 (18 Line) .....	12
Gothic 004 (8 Line) .....	14
Gothic 004 (10 Line) .....	14
Gothic 004 (18 Line) .....	14
Gothic 005 (8 Line) .....	16
Gothic 006 (12 Line) .....	18
Gothic 007 (5 Line) .....	20
Gothic 007 (8 Line) .....	20
Gothic 008 (6 Line) .....	22
Gothic Italic (10 Line).....	24
Gothic Light Super Cond. (6 Line).....	26
Gothic Light Super Cond. (8 Line).....	26
Gothic Light Super Cond. (10 Line).....	26
Gothic Light Super Cond. (12 Line).....	26
Gothic Light Super Cond. (20 Line).....	26
Gothic Light Super Cond. (24 Line).....	26
Gothic Light Super Cond. (30 Line).....	26
Gothic Outline (4 Line).....	30

Gothic Outline (5 Line).....	30
Gothic Outline (6 Line).....	30
Gothic Regular (6 Line) .....	32
Gothic Regular (8 Line) .....	32
Gothic Regular (10 Line) .....	32
Gothic Regular (20 Line) .....	32
Gothic Regular Cond. (4 Line).....	34
Gothic Regular Cond. (6 Line).....	34
Gothic Regular Cond. (8 Line).....	34
Gothic Regular Cond. (12 Line).....	34
Gothic Regular Cond. (15 Line).....	34
Gothic Regular Cond. (30 Line).....	34
Gothic Regular Super Cond. (5 Line) .....	38
Gothic Regular Super Cond. (6 Line) .....	38
Gothic Regular Super Cond. (8 Line) .....	38
Gothic Regular Super Cond. (10 Line) .....	38
Gothic Regular Super Cond. (12 Line) .....	38
Gothic Regular Super Cond. (15 Line) .....	38
Gothic Regular Super Cond. (18 Line) .....	38
Gothic Regular Super Cond. (24 Line) .....	38
Gothic Special (6 Line).....	44
Modified Gothic Condensed (6 Line) .....	46
Modified Gothic Condensed (8 Line) .....	46
Modified Gothic Condensed (10 Line) .....	46

## **SERIF**

Clarendon (4 Line) .....	50
Serif 001 (6 Line) .....	52
Serif 002 (6 Line) .....	54
Serif 003 (10 Line) .....	56

Serif 003 (15 Line) .....	56
Serif 004 (6 Line) .....	58
Serif 004 (8 Line) .....	58
Serif 005 (6 Line) .....	60
Serif 006 (8 Line) .....	62
Serif 006 (10 Line) .....	62
Serif 006 (12 Line) .....	62
Serif 006 (15 Line) .....	62
Serif 007 (6 Line) .....	64
Serif 007 (14 Line) .....	64
Serif 008 (8 Line) .....	66
Serif 009 (4 Line) .....	68
Serif 010 (6 Line) .....	70

## **DISPLAY**

Balloon Bold (8 Line) .....	74
Ben Franklin Condensed (12 Line).....	76
Ben Franklin (5 Line) .....	78
Ben Franklin (10 Line).....	80
Black Letter 001 (8 Line) .....	82
Brush (12 Line) .....	84
Dom Casual (6 Line).....	86
Dom Casual (8 Line).....	86
Dom Casual (10 Line).....	86
Script 001 (6 Line) .....	88
Script 001 (12 Line) .....	88
Tuscan (16 line).....	90
Wolkse Streamers .....	93
Wooden Dingbats .....	94-95

G O T H I C



# GEOMETRIC SANS SERIF

**A B C D E F G H J K**  
**L M N O P Q R S T**  
**U V W X Y Z \$ ¢ " !**  
**0 1 2 3 4 5 6 7 8 9**  
**a d c b e f h i k m n o r s t u v**  
**w x z 1 0 2 3 4 5 6 7 8 9 &**  
**? % \$ ¢ " " / 1 / 2 / 3 / 4 - : .**

CASE NO.	LINE SIZE	A-Z	a-z	123
1202	5		ipqy	●
1209	5	●		●
1228	6	●		●
1228	8	K		●
1240	8	A		●
1241	8	I		●

Not to scale

**GEOMETRIC SANS SERIF** history unknown.

## ACTUAL SIZE SPECIMEN **GEOMETRIC SANS SERIF**

**ad c b e**    **A B C D E**    **A B C D**  
*Bold, Case 1202, 5 line*                      *Bold, Case 1209, 5 line*                      *Regular, Case 1228, 6 line*

**A B C D E F G H I J L**  
*Regular, Case 1228, 8 line*

**B C D E F G H I J K L**  
*Light, Case 1240, 8 line*

**A B C D E F G H J K**  
*Regular, Case 1241, 8 line*



# GOTHIC

**ABCDEFGHIJK  
LMNOPQRSTU  
VWYZ\$?!&  
0123456789**

*Not to scale*

**GOTHIC** First shown by Leavenworth, circa 1837, in a condensed style. The heavy style of Gothic was not cast by American typefounders until very late nineteenth century.

CASE NO.	LINE SIZE	A-Z	a-z	123
1218	6	●		●
1222	8	●		●
1236	8	x		●
1257	12	x		●
1274	20	Q		●

4

## ACTUAL SIZE SPECIMEN **GOTHIC**

**ABCDEFGHIJKLMN**

*Case 1218, 6 line*

**ABCDEFGHIJK**

*Case 1222, 8 line*

**ABCDEFGHIJK**

*Case 1236, 8 line*

5

## ACTUAL SIZE SPECIMEN **GOTHIC**

**ABCDEFG**

*Case 1257, 12 line*

**ABCE**

*Case 1274, 20 line*

6

7



# GOTHIC 001

ABCDEFGHIJKLMNO  
PQRSTUVWXYZ!  
:~?-&;

*Not to scale*

CASE NO.	LINE SIZE	A-Z	a-z	123
1236	8	●		

**GOTHIC 001** history unkown.

8

ACTUAL SIZE SPECIMEN **GOTHIC 001**

ABCDEFGHIJKLMNO  
PQRSTUVWXYZ!  
:~?-&;

*Case 1236, 8 line*

9

# GOTHIC 002

ABCDEFGHIJKLMN OPQRS  
TUVWXYZ " " - ? \$ ¢ 1/4 1/3 1/2  
123456789

*Not to scale*

**GOTHIC 002** history unknown.

CASE NO.	LINE SIZE	A-Z	a-z	123
1207	6	●		●

## ACTUAL SIZE SPECIMEN **GOTHIC 002**

ABCDEFGHIJKLMN OPQRS  
TUVWXYZ " " - ? \$ ¢ 1/4 1/3 1/2  
123456789

*Case 1207, 6 line*

# GOTHIC 003

**ABCDEFGHIJKLMN  
OP  
QRSTUVWXYZ. " ' - & ?  
0123456789\$%**

*Not to scale*

**GOTHIC 003** history unknown.

CASE NO.	LINE SIZE	A-Z	a-z	123
1206	6	●	●	●
1257	12	●		●
1273	18	●	●	

12

ACTUAL SIZE SPECIMEN **GOTHIC 003**

**ABCDEFGHIJKLMN  
OP**

*Case 1206, 6 line*

**ABC**

*Case 1257, 12 line*

**ABC**

*Case 1273, 18 line*

13



# GOTHIC 004

ABCDEFGHIJKLMNO P Q  
RSTUVWXYZ(!?&)\$:;-’  
abcdefghijklmnopqrstu vw  
xyz0123456789

*Not to scale*

**GOTHIC 004** history unknown.

CASE NO.	LINE SIZE	A-Z	a-z	123
1231	8	●	●	●
1241	10		●	
1244	10	●	●	●
1272	18	●		●

## ACTUAL SIZE SPECIMEN **GOTHIC 004**

ABCDEFGH

*Case 1231, 8 line*

abcdefgh

*Case 1241, 10 line*

ABCDEF

*Case 1244, 10 line*

ABCD

*Case 1272, 18 line*



# GOTHIC 005

**abcdefghijklmnop  
qrstuvwxyz**

*Not to scale*

**GOTHIC 005** history unknown.

CASE NO.	LINE SIZE	A-Z	a-z	123
1225	8		●	

ACTUAL SIZE SPECIMEN **GOTHIC 005**

**abcdefghijklmnop  
qrstuvwxyz**

*Case 1225, 8 line*

# GOTHIC 006

abcdefghijkl  
mnopqrstuv  
wxyz

*Not to scale*

**GOTHIC 006** history unknown.

CASE NO.	LINE SIZE	A-Z	a-z	123
1253	12		●	

18

ACTUAL SIZE SPECIMEN **GOTHIC 006**

abcdefghijkl  
mnopqrstuv  
wxyz

*Case 1253, 12 line*

19

# GOTHIC 007

**ABCDEFGHIJKLMN  
OPQRSTUVWXYZ&  
0123456789**

*Not to scale*

**GOTHIC 007** history unknown.

CASE NO.	LINE SIZE	A-Z	a-z	123
1211	5	●		●
1224	8	KUE		●

20

ACTUAL SIZE SPECIMEN **GOTHIC 007**

**ABCDEFGHIJKLMN  
OP**

*Case 1211, 5 line*

**ABCDEFGHIJLM**

*Case 1224, 8 line*

21



# GOTHIC 008

ABCDEFGHIJKLMNO  
PQRSTUVWXYZ!?:.&  
0123456789

*Not to scale*

**GOTHIC 008** history unknown.

CASE NO.	LINE SIZE	A-Z	a-z	123
1210	6	●		●

22

ACTUAL SIZE SPECIMEN **GOTHIC 008**

ABCDEFGHIJKLMNO  
PQRSTUVWXYZ!?:.&  
0123456789

*Case 1210, 6 line*

23

# GOTHIC ITALIC

**ABCDEFGHIJK  
LMNOPQRST  
UVWXYZ&\$!?  
1234567890**

*Not to scale*

**GOTHIC ITALIC** history unknown.

CASE NO.	LINE SIZE	A-Z	a-z	123
1249	10	●		●

ACTUAL SIZE SPECIMEN **GOTHIC ITALIC**

**ABCDEFGHIJK  
LMNOPQRST  
UVWXYZ&\$!?**

*Case 1249, 10 line*



# GOTHIC LIGHT SUPER COND.

**A B C D E F G H I J K L M O P Q R S T**  
**U V W X Y Z 1 2 3 4 5 6 7 8 9 0**  
**’ - ! \$ & ?**  
**” .**

*Not to scale*

## GOTHIC LIGHT SUPER CONDENSED

First shown by Leavenworth, circa 1837, in a condensed style. The heavy style of Gothic was not cast by American typefounders until very late nineteenth century.

CASE NO.	LINE SIZE	A-Z	a-z	123
1221	6	●		●
1232	8	●		●
1242	10	●		●
1252	12	●		●
1275	20	●		
1276	24	●		
1281	30	●		●

26

## ACTUAL SIZE SPECIMEN GOTHIC LIGHT SUPER CONDENSED

**A B C D E F G H I J K L M N O P Q R S T U V W X Y Z \$ ! ? ” .**

*Case 1221, 6 line*

**A B C D E F G H I J K L M N O P Q R S T U V W**

*Case 1232, 8 line*

**A B C D E F G H I J K L M O P Q R S T**

*Case 1242, 10 line*

27

## ACTUAL SIZE SPECIMEN GOTHIC LIGHT SUPER CONDENSED

**A B C D E F G H I J K L M N O P**

*Case 1252, 12 line*

**B C D E F G H I J K**

*Case 1275, 20 line*

28

## ACTUAL SIZE SPECIMEN GOTHIC LIGHT SUPER CONDENSED

**A B C A B C**

*Case 1276, 24 line*

*Case 1281, 30 line*

29



# GOTHIC OUTLINE

ABCDEFGHIJKLMN O P R S T U V W X  
 Y Z & \$ ! ? 0 1 2 3 4 5 6 7 8 9

Not to scale

**GOTHIC OUTLINE** history unknown.

CASE NO.	LINE SIZE	A-Z	a-z	123
1209	4	●		●
1209	5	●		●
1215	6	●		●
1221	6	●		●

## ACTUAL SIZE SPECIMEN **GOTHIC OUTLINE**

ABCDEFGHIJKLMN O P R S T U V

Case 1209, 4 line

ABCDEFGHIJKLMN O P Q R S

Case 1209, 5 line

ABCDEFGHIJKLMN O P

Case 1215, 6 line

ABCDEFGHIJKLMN O P

Case 1221, 6 line

# GOTHIC REGULAR

**ABCDEFGHIJKLM**  
**NOPQRSTUVWXYZ**  
**YZabcdefghijklmnop**  
**qrstuvwxyz&?!  
 fffffffl**

*Not to scale*

**GOTHIC REGULAR** First shown by Leavenworth, circa 1837, in a condensed style. The heavy style of Gothic was not cast by American typefounders until very late nineteenth century.

CASE NO.	LINE SIZE	A-Z	a-z	123
1217	6	●		●
1239	8	●	●	
1243	10	●		●
1275	20	HJL TWZ		

## ACTUAL SIZE SPECIMEN **GOTHIC REGULAR**

**ABCDE**

*Case 1217, 6 line*

**ABCD**

*Case 1239, 8 line*

**ABCD**

*Case 1243, 10 line*

**BCDEF**

*Case 1275, 20 line*



# GOTHIC REGULAR COND.

**ABCDEFGHIJKLMNO**  
**PQRSTUVWXYZ&?¢**  
**abcdefghijklmnopqrstu**  
**vwxyz0123456789**

*Not to scale*

**GOTHIC REGULAR CONDENSED** First shown by Leavenworth, circa 1837, in a condensed style. The heavy style of Gothic was not cast by American typefounders until very late nineteenth century.

CASE NO.	LINE SIZE	A-Z	a-z	123
1202	4	ABIO		
1208	6	●		
1225	8	●		
1230	8	●	●	
1250	12	●		●
1268	15	●		●
1270	15	●	●	●
1279	30	●		
1280	30	●		

## ACTUAL SIZE SPECIMEN **GOTHIC REGULAR CONDENSED**

**BCDEFGHJKLMNPRSTUVWXYZ**

*Case 1202, 4 line*

**ABCDEFGHIJKLMNPO**

*Case 1208, 6 line*

**ABCDEFGHIJKLMNO**

*Case 1230, 8 line*

**ABCDEFGHIJLNOPO**

*Case 1225, 8 line*

## ACTUAL SIZE SPECIMEN **GOTHIC REGULAR CONDENSED**

**ABCDEFGHIJ**

*Case 1250, 12 line*

**ABCD ABCD**

*Case 1270, 15 line*

*Case 1268, 15 line*

## ACTUAL SIZE SPECIMEN **GOTHIC REGULAR CONDENSED**

**ABC**

*Case 1279-1280, 30 line*



# GOTHIC REGULAR SUPER COND.

**ABCDEFGHIJKLMNOPQRSTUVWXYZ**  
**abcdefghijklmnopqrstuvwxyz**  
**0123456789&\$!?**

*Not to scale*

## GOTHIC REGULAR SUPER CONDENSED

First shown by Leavenworth, circa 1837, in a condensed style. The heavy style of Gothic was not cast by American typefounders until very late nineteenth century.

CASE NO.	LINE SIZE	A-Z	a-z	123
1203	5	●	●	
1211	6	●	●	●
1220	8	●	●	●
1238	8	●		●
1244	10	●	●	
1254	12	●		
1268	15	●		●
1271	18	●		●
1272	18	●		●
1277	24	●		●
1278	24	●		●

38

## ACTUAL SIZE SPECIMEN GOTHIC REGULAR SUPER CONDENSED

**ABCDEFGHIJKLMNOPQRSTUVWXYZ Z abcdef**

*Case 1203, 5 line*

**ABCDEFGHIJKLMNOPQRSTUVWXYZ**

*Case 1211, 6 line*

**ABCDEFGHIJKLMNOPQRSTUVWXYZ**

*Case 1220, 8 line*

**ABCDEFGHIJKLMNOPQRSTUVWXYZ**

*Case 1238, 8 line*

39

## ACTUAL SIZE SPECIMEN GOTHIC REGULAR SUPER CONDENSED

**ABCDEFGHIJKLMN**

*Case 1244, 10 line*

**ABCDEF ABCDEF**

*Case 1254, 12 line*

*Case 1268, 15 line*

40

## ACTUAL SIZE SPECIMEN GOTHIC REGULAR SUPER CONDENSED

**ABCDEFGHIJKL**

*Case 1271, 18 line*

**ABCDEFGHIJ**

*Case 1272, 18 line*

41

## ACTUAL SIZE SPECIMEN GOTHIC REGULAR SUPER CONDENSED

**ABCDEF**

*Case 1277, 24 line*

42

## ACTUAL SIZE SPECIMEN GOTHIC REGULAR SUPER CONDENSED

**ABCDEFG**

*Case 1278, 24 line*

43



# GOTHIC SPECIAL

ABCDEFGHIJKLMNOPQRSTUVWXYZ-?!.:

*Not to scale*

**GOTHIC SPECIAL** Designed and cut by  
the Hamilton Company after 1900.

CASE NO.	LINE SIZE	A-Z	a-z	123
1210	6	●		

ACTUAL SIZE SPECIMEN **GOTHIC SPECIAL**

ABCDEFGHIJKLMNOPQRSTUVWXYZ-?!.:

*Case 1210, 6 line*

# MODIFIED GOTHIC COND.

ABCDEFGHIJKL  
 MNOPQRSTUVWXYZ  
 WXYZ 0-9 ! \$ % & ' ( ) \* + , - . : ;  
 123456789

CASE NO.	LINE SIZE	A-Z	a-z	123
1215	6	NO RZ		●
1232	8	●		
1240	8	●		
1245	10			●
1246	10	●	●	

Not to scale

**MODIFIED GOTHIC CONDENSED** Design cut late in the century. This cutting by the Tubbs Company.

## ACTUAL SIZE SPECIMEN **MODIFIED GOTHIC CONDENSED**

abcdefghijklmnopqstu

Case 1215, 6 line

ABCDEFGHIJKL

Case 1232, 8 line

ABDEFG ABCEDEF

Case 1240, 8 line

Case 1245-1246, 10 line

SERIF

---

# CLARENDON

**ABCDEFGHIJKLMNOPQRSTUVWXYZ&**

*Not to scale*

**CLARENDON** history unknown.

CASE NO.	LINE SIZE	A-Z	a-z	123
1203	4	●	●	●

ACTUAL SIZE SPECIMEN **CLARENDON**

**ABCDEFGHIJKLMNOPQRSTUVWXYZ&**

*Case 1203, 4 line*

# SERIF 001

A B C D E F G H I J K L M N  
O P Q R S T U V W X Y Z  
?!@&

*Not to scale*

**SERIF 001** history unknown.

CASE NO.	LINE SIZE	A-Z	a-z	123
1204	6	●		●

ACTUAL SIZE SPECIMEN **SERIF 001**

A B C D E F G H I J K L M N

*Case 1204, 6 line*



# SERIF 002

0123456789

*Not to scale*

**SERIF 002** history unknown.

CASE NO.	LINE SIZE	A-Z	a-z	123
1208	6			●

## ACTUAL SIZE SPECIMEN **SERIF 002**

0123456789

*Case 1208, 6 line*

# SERIF 003

ABCDEFGHIJKL  
MNOPRSTVWXY  
Z123456789?!&\$.,

*Not to scale*

**SERIF 003** history unknown.

CASE NO.	LINE SIZE	A-Z	a-z	123
1242	10	QU		●
1269	15	●		●

## ACTUAL SIZE SPECIMEN **SERIF 003**

ABCDEFGHIJKL

*Case 1242, 10 line*

ABCDEFGH

*Case 1269, 15 line*

# SERIF 004

ABCDEFGHIJK  
LMNOPQRSTU  
VWXYZ&?!-:;  
abcdefghijklmnopq  
rstuvwxyz

*Not to scale*

**SERIF 004** history unknown.

CASE NO.	LINE SIZE	A-Z	a-z	123
1219	6	●	●	
1235	8	●	●	●

58

ACTUAL SIZE SPECIMEN **SERIF 004**

ABCDEFGHIJK

*Case 1219, 6 line*

ABCDEFGH

*Case 1235, 8 line*

59

# SERIF 005

abcdefghijklmnopqrs  
tuvwxyz

*Not to scale*

**SERIF 005** history unknown.

CASE NO.	LINE SIZE	A-Z	a-z	123
1216	6		●	

ACTUAL SIZE SPECIMEN **SERIF 005**

abcdefghijklmnopqrs  
tuvwxyz

*Case 1216, 6 line*



# SERIF 006

**A B C D E F G**  
**H I J K L M N**  
**O P Q R S T U**  
**V W X Y Z & ?**  
**a b c d e f h i k l m**  
**n o p q r s t u v w**  
**x y z 0 1 2 3 4 5 6**  
**7 8 9**

*Not to scale*

**SERIF 006** history unknown.

CASE NO.	LINE SIZE	A-Z	a-z	123
1231	8	●	●	
1234	8	●	●	●
1248	10	●	●	●
1256	12	●	●	
1267	15	MISC	misc	

## ACTUAL SIZE SPECIMEN **SERIF 006**

**A D E G H I M N O**

*Case 1231, 8 line*

**A B C D E F G H I J**

*Case 1234, 8 line*

**A B C A B C**

*Case 1248, 10 line*

*Case 1256, 12 line*



# SERIF 007

ACDEFGHIJKLOPQ  
RSTUVWXYZ!.,;&  
456789

*Not to scale*

**SERIF 007** history unknown.

CASE NO.	LINE SIZE	A-Z	a-z	123
1217	6	B		
1267	14	MISC		

64

ACTUAL SIZE SPECIMEN **SERIF 007**

ACDEFGHIJKLO

*Case 1217, 6 line*

ABCDE

*Case 1267, 14 line*

65

# SERIF 008

ABCDEFGHIJKL  
MNOPRSTUVWX  
YZabcdefghijklmnop  
nopqrstuvwxyz  
&!,:.

*Not to scale*

**SERIF 008** history unknown.

CASE NO.	LINE SIZE	A-Z	a-z	123
1238	8	●	●	

66

## ACTUAL SIZE SPECIMEN **SERIF 008**

ABCDEFGHIJKL  
MNOPRSTUVWX  
YZabcdefghijklmnop

*Case 1238, 8 line*

67

# SERIF 009

ABCDEFGHIJKLMNO  
PQRSTUVWXYZ *and*  
abcdefghijklmnopqrstuvwxyz  
fflftffiff *The&\$QJypqjg*  
123456789

Not to scale

**SERIF 009** history unknown.

CASE NO.	LINE SIZE	A-Z	a-z	123
1201	4	●	●	●

## ACTUAL SIZE SPECIMEN **SERIF 009**

ABCDEFGHIJKLMNO  
PQRSTUVWXYZ *and*  
abcdefghijklmnopqrstuvwxyz  
fflftffiff *The&\$QJypqjg*  
123456789

Case 1201, 4 line



# SERIF 010

ABCDEFGHIJK  
LMNOPRSTUV  
WXYZ&  
abcdefghijklmnop  
vwxyzfiffiffi  
Qjgqpy

*Not to scale*

**SERIF 010** history unknown.

CASE NO.	LINE SIZE	A-Z	a-z	123
1226	6	●	●	

## ACTUAL SIZE SPECIMEN **SERIF 010**

ABCDEFGHIJK  
LMNOPRSTUV  
WXYZ&

*Case 1226, 6 line*



DISPLAY

---

# BALLOON BOLD

**A B C D E F G H I J K**  
**L M N O P Q R S T**  
**U V W X Y Z ! ? \$ . : &**  
**0 1 2 3 4 5 6 7 8 9**

*Not to scale*

**BALLOON** is a family of italic capitals in three weights, designed in 1939 for ATF by Max R. Kaufmann. They feature a plain, unadorned, hand lettered appearance, as though carefully drawn with a brush. Design copied from metal type design of the founders.

CASE NO.	LINE SIZE	A-Z	a-z	123
1237	8	●		●

74

## ACTUAL SIZE SPECIMEN **BALLOON BOLD**

**A B C D E F G H I J K**  
**L M N O P Q R S T**  
**U V W X Y Z ! ? \$ . : &**  
**0 1 2 3 4 5 6 7 8 9**

*Case 1237, 8 line*

75

# BEN FRANKLIN COND.

ABCDEFGHIJK  
LMNOPQRST  
UVWXYZ!?

CASE NO.	LINE SIZE	A-Z	a-z	123
1255	12	●		

*Not to scale*

**BEN FRANKLIN** cut by Hamilton and shown near the end of the century. Design copied from metal type design of the founders.

76

## ACTUAL SIZE SPECIMEN **BEN FRANKLIN CONDENSED**

ABCDEFGHIJK  
LMNOPQRST

*Case 1255, 12 line*

77



# BEN FRANKLIN FIVE LINE

**ABCDEFGHIJKLMN  
OPQRSTUVWXYZ**

*Not to scale*

**BEN FRANKLIN** cut by Hamilton and shown near the end of the century. Design copied from metal type design of the founders.

CASE NO.	LINE SIZE	A-Z	a-z	123
1205	5	●		

78

ACTUAL SIZE SPECIMEN **BEN FRANKLIN FIVE LINE**

**ABCDEFGHIJKLMN  
OPQRSTUVWXYZ**

*Case 1205, 5 line*

79

# BEN FRANKLIN TEN LINE

ABCDE  
FGHIJK  
LMNOP  
QRSTU  
VWXYZ  
1234567.  
890.&\$!.,;

*Not to scale*

**BEN FRANKLIN** cut by Hamilton and shown near the end of the century. Design copied from metal type design of the founders.

CASE NO.	LINE SIZE	A-Z	a-z	123
1245	10	●		●

80

## ACTUAL SIZE SPECIMEN **BEN FRANKLIN TEN LINE**

A B C D E  
F G H I J K  
L M N O P

*Case 1245, 10 line*

81



# BLACK LETTER 001

A B C D E F G H I J K L  
M N O P Q R S T U V W  
X Y Z a b c d e f g h i j k l m n  
o p q r s t u v w x y z : ; ! & \$ ?  
0 1 2 3 4 5 6 7 8 9

*Not to scale*

**BLACK LETTER 001** history unknown.

CASE NO.	LINE SIZE	A-Z	a-z	123
1233	8	●	●	●

82

ACTUAL SIZE SPECIMEN **BLACK LETTER 001**

A B C D E F G H I J K L  
M N O P Q R S T U V W  
X Y Z a b c d e f g h i j k l m n

*Case 1233, 8 line*

83



# BRUSH TWELVE LINE

A sample of the 'BRUSH TWELVE LINE' font in a bold, black, brush script style. The word 'BOURNE' is written in a dynamic, cursive-like font with thick strokes and visible brush texture.

*Not to scale*

**BRUSH** history unknown.

CASE NO.	LINE SIZE	A-Z	a-z	123
1258	12	MISC		

## ACTUAL SIZE SPECIMEN **BRUSH TWELVE LINE**

A large, high-resolution specimen of the 'BRUSH TWELVE LINE' font. The word 'BOURNE' is rendered in a bold, black, brush script style, showing the texture and thickness of the brush strokes in detail.

*Case 1258, 12 line*

# DOM CASUAL

ABCDEFGHIJKLMNOPQRSTUVWXYZ  
UTVWXYZ&\$!?!&abcdefghijklmnop  
ijklmnopqrstuvwxyz

*Not to scale*

**DOM CASUAL** is a very informal, contemporary design with a brush lettered effect, produced by Pete Dom for photolettering, and cut by ATF about 1952 at the instigation of Steve Watts.

CASE NO.	LINE SIZE	A-Z	a-z	123
1223	6	●	●	●
1229	8	●	●	●
1247	10	●	●	

86

## ACTUAL SIZE SPECIMEN **DOM CASUAL**

ABCDEFGHIJKLMNOPQRSTUVWXYZ

*Case 1223, 6 line*

ABCDEFGHIJKLMNOP

*Case 1229, 8 line*

ABCDEFGHIJK

*Case 1247, 10 line*

87

# SCRIPT 001

ABCDEFGHIJKL  
MNOPQRSTUVWXYZ  
XYZ&

*Not to scale*

**SCRIPT 001** history unknown.

CASE NO.	LINE SIZE	A-Z	a-z	123
1205	6	●		
1212	6		●	●
1251	12	●	●	

88

## ACTUAL SIZE SPECIMEN **SCRIPT 001**

ABCDEFGHIJKL

*Case 1205, 6 line*

abcdefghijklmnopqr

*Case 1212, 6 line*

ABCDEE

*Case 1251, 12 line*

89



# TUSCAN



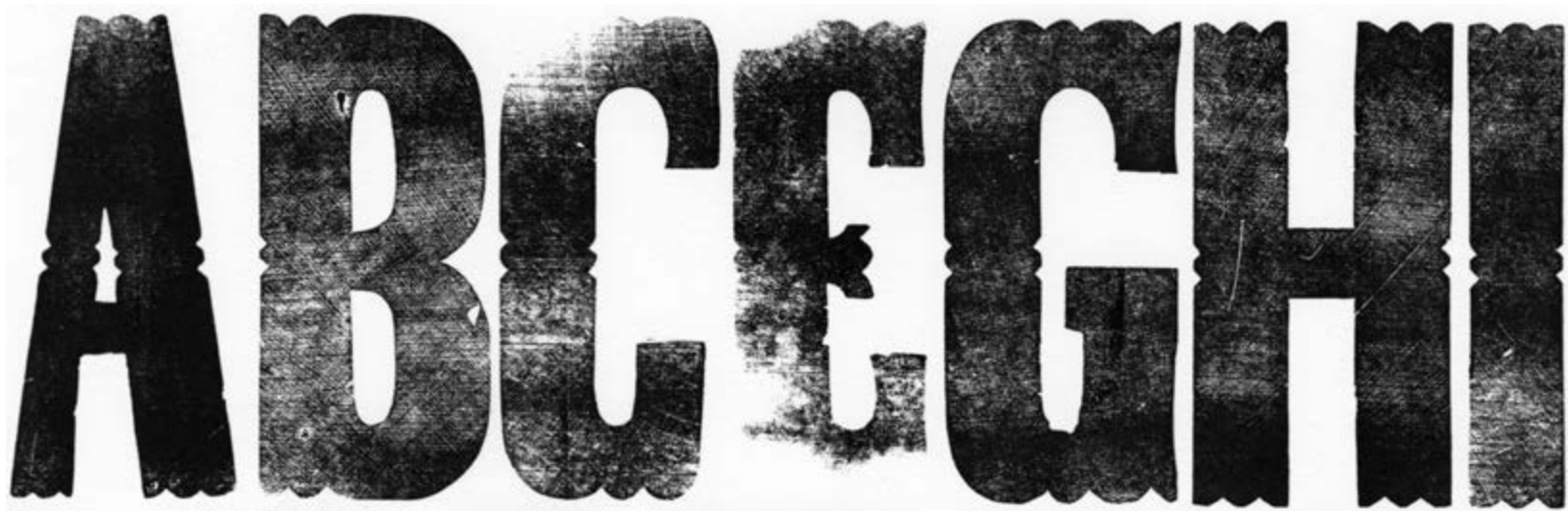
*Not to scale*

**TUSCAN** this particular cut seems to be carved by hand from a gothic face to imitate Tuscan faces first seen in the late 1800's.

CASE NO.	LINE SIZE	A-Z	a-z	123
1259	16	D		

90

## ACTUAL SIZE SPECIMEN **TUSCAN**



*Case 1259, 16 line*

91

# VIRGIN WOOD TYPE STREAMERS

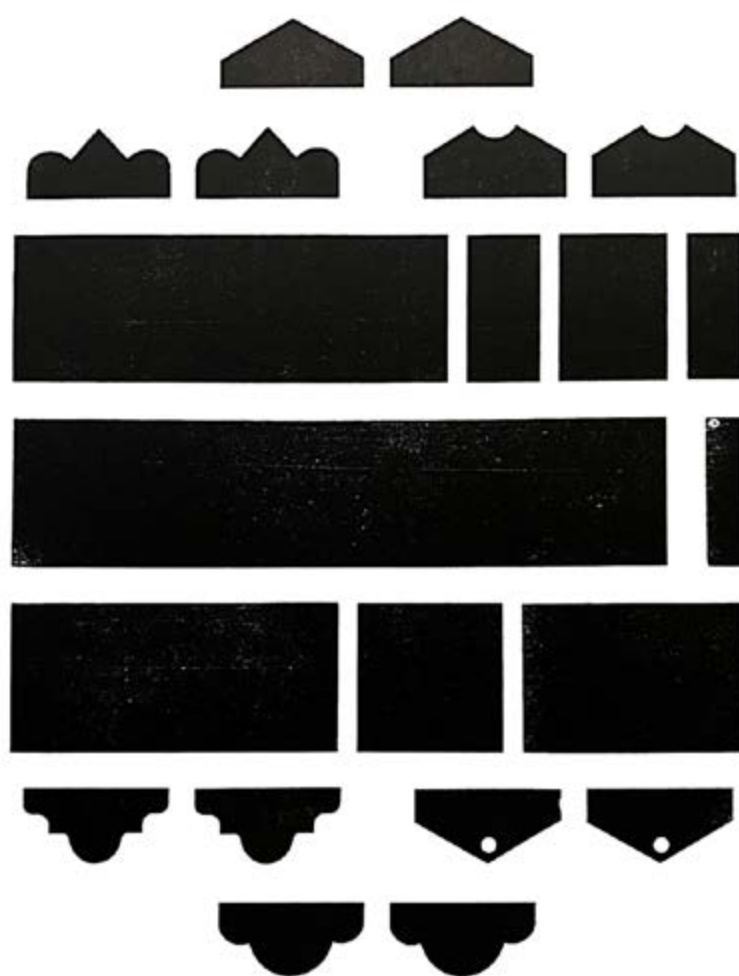
David Wolske revived the classic streamer for Virgin Wood Type, but with a twist. Historically, streamers have had the letters cut into the wood streamer. David Wolske's twist allows for more creativity. The letterpress printer puts down the streamer first to achieve a background streamer. Now the printer can use his/her own woodtype to overprint on to the streamer.

The type-to-streamer *recommended* ratio is: 6-line type with 8-line streamer; 8-line type with 10-line streamer; and 10-line type with 12-line streamer.

There are 6 end-cap designs included with end-grain maple blanks in 36, 24, 18, 12, 8, 6, 4, 3, 2 pica widths.

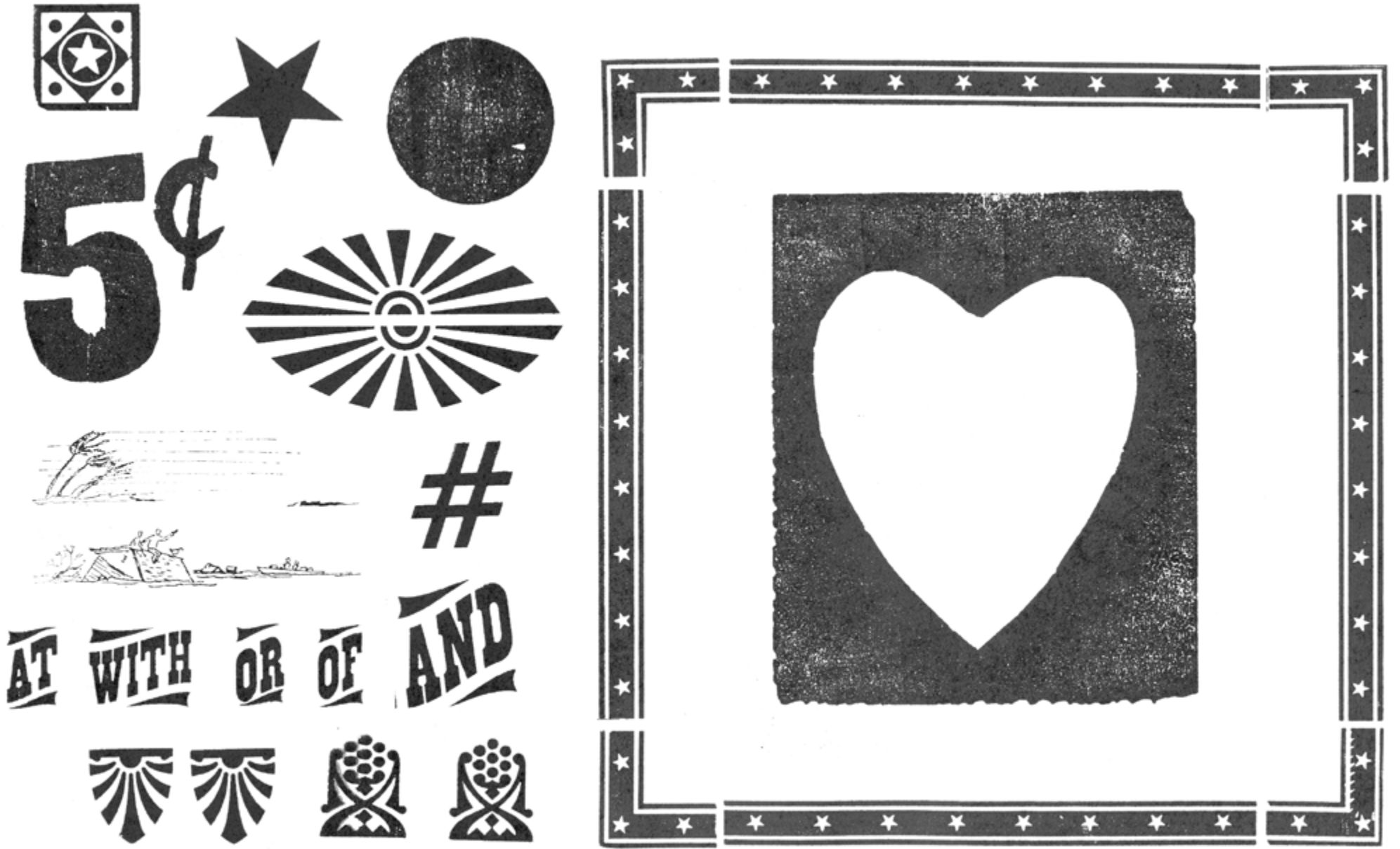


*Example of intended use*

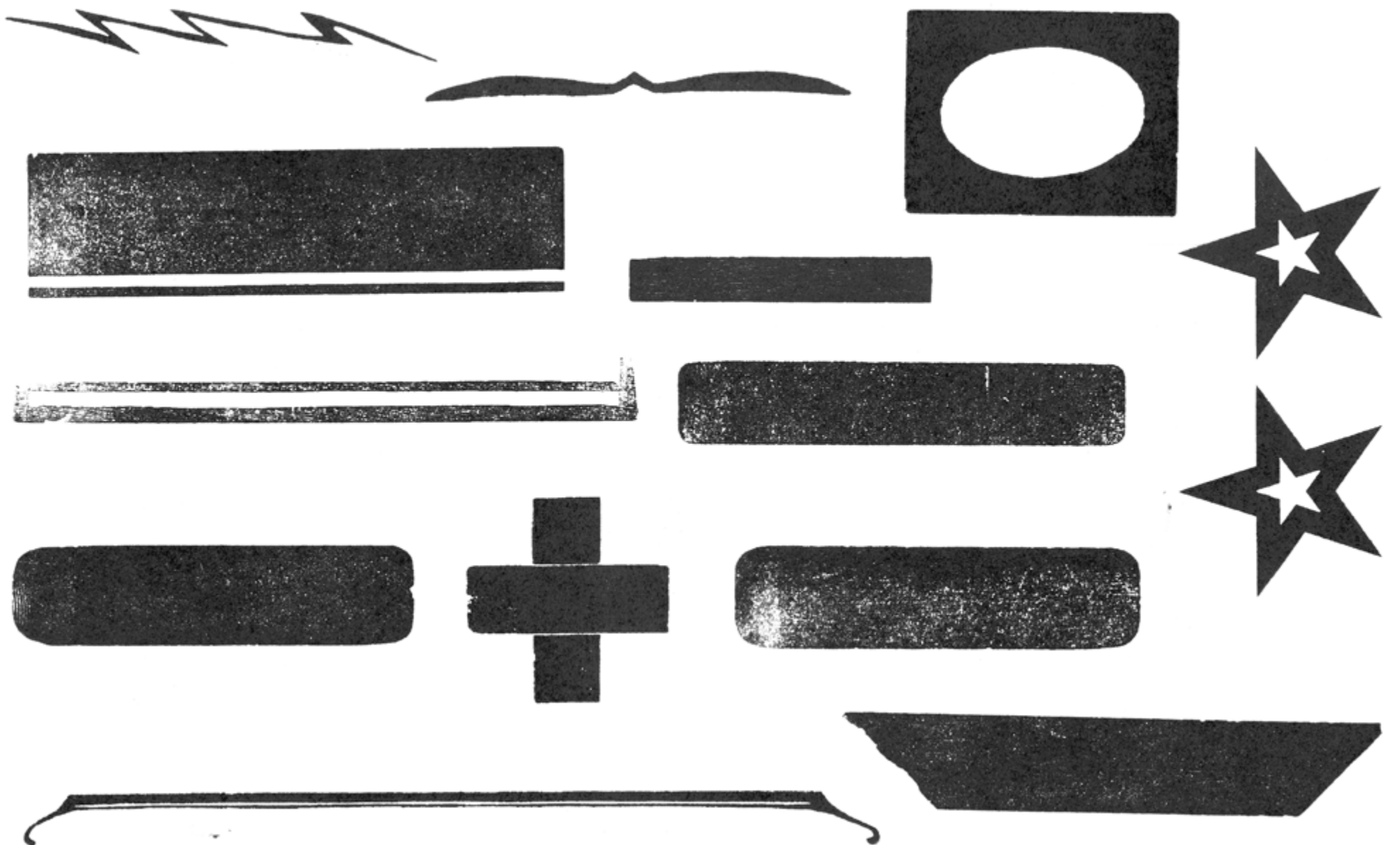


*Case 1213*

WOODEN DINGBATS CASE 1200



WOODEN DINGBATS CASE 1200





# WOOD TYPE COLLECTION OVERVIEW

● COMPLETE ○ INCOMPLETE

TYPEFACE NAME	CASE	LINE	A-Z	a-z	123
SERIF 009	1201	4	●	●	●
GOTHIC REGULAR CONDENSED	1202	4	○		
GEOMETRIC SANS SERIF	1202	5		○	●
CLARENDON	1203	4	●		
GOTHIC REG. SUPER CONDENSED	1203	5	●	●	
SERIF 001	1204	6	●		
BEN FRANKLIN FIVE LINE	1205	5	●		
SCRIPT 001	1205	6	●		
GOTHIC 003	1206	6	●	●	●
GOTHIC 002	1207	6	●		
GOTHIC REGULAR CONDENSED	1208	6	●		
SERIF 002	1208	6			●
GOTHIC OUTLINE	1209	4	●		●
GOTHIC OUTLINE	1209	5	●		●
GEOMETRIC SANS SERIF	1209	5	●		●
GOTHIC SPECIAL	1210	6	●		
GOTHIC 008	1210	6	●		●
GOTHIC REG. SUPER CONDENSED	1211	6	●	●	●
GOTHIC 007	1211	5	●		●
SCRIPT 001	1212	6		●	●
WOLKSE BANNERS	1213	-	-	-	-
GOTHIC OUTLINE	1215	6	●		●
MODIFIED GOTHIC CONDENSED	1215	6	○		●
SERIF 005	1216	6		●	

TYPEFACE NAME	CASE	LINE	A-Z	a-z	123
GOTHIC REGULAR	1217	6	●		●
SERIF 007	1217	6	○		
GOTHIC	1218	6	●		●
SERIF 004	1219	6	●	●	
GOTHIC REG. SUPER CONDENSED	1220	8	●	●	●
GOTHIC LIGHT SUPER CONDENSED	1221	6	●		●
GOTHIC OUTLINE	1221	6	●		●
GOTHIC	1222	8	●		●
DOM CASUAL	1223	6	●	●	●
GOTHIC 007	1224	8	○		●
GOTHIC REGULAR CONDENSED	1225	8	●		
GOTHIC 005	1225	8		●	
SERIF 010	1226	6	●	●	
GEOMETRIC SANS SERIF	1228	6	●		●
GEOMETRIC SANS SERIF	1228	8	○		●
DOM CASUAL	1229	8	●	●	●
GOTHIC REGULAR CONDENSED	1230	8	●	●	
GOTHIC 004	1231	8	●	●	●
SERIF 006	1231	8	●	●	
GOTHIC LIGHT SUPER CONDENSED	1232	8	●		●
MODIFIED GOTHIC CONDENSED	1232	8	●		
BLACK LETTER 001	1233	8	●	●	●
SERIF 006	1234	8	●	●	●
SERIF 004	1235	8	●	●	●

TYPEFACE NAME	CASE	LINE	A-Z	a-z	123
GOTHIC	1236	8	○		●
GOTHIC 001	1236	8	●		
BALLOON BOLD	1237	8	●		●
GOTHIC REG. SUPER CONDENSED	1238	8	●		●
SERIF 008	1238	8	●	●	
GOTHIC REGULAR	1239	8	●	●	
MODIFIED GOTHIC CONDENSED	1240	8	●		
GEOMETRIC SANS SERIF	1240	8	○		●
GOTHIC 004	1241	10		●	
GEOMETRIC SANS SERIF	1241	8	○		●
GOTHIC LIGHT SUPER CONDENSED	1242	10	●		●
SERIF 003	1242	10	○		●
GOTHIC REGULAR	1243	10	●	●	
GOTHIC REG. SUPER CONDENSED	1244	10	●	●	
GOTHIC 004	1244	10	●	●	●
BEN FRANKLIN TEN LINE	1245	10	●		●
MODIFIED GOTHIC CONDENSED	1245	10			●
MODIFIED GOTHIC CONDENSED	1246	10	●	●	
DOM CASUAL	1247	8			
DOM CASUAL	1247	10	●	●	
SERIF 006	1248	10	●	●	●
GOTHIC ITALIC	1249	10	●		●
GOTHIC REGULAR CONDENSED	1250	12	●		●
SCRIPT 001	1251	12	●	●	
GOTHIC LIGHT SUPER CONDENSED	1252	12	●		●
GOTHIC 006	1253	12		●	

TYPEFACE NAME	CASE	LINE	A-Z	a-z	123
GOTHIC REG. SUPER CONDENSED	1254	12	●		
BEN FRANKLIN CONDENSED	1255	12	●		
SERIF 006	1256	12	●	●	
GOTHIC	1257	12	○		●
GOTHIC 003	1257	12	●		●
BRUSH 12 LINE	1258	12	○		
TUSCAN	1259	16	○		
SERIF 006	1267	15	○	○	
SERIF 007	1267	14	○		
GOTHIC REG. SUPER CONDENSED	1268	15	●		●
GOTHIC REGULAR CONDENSED	1268	15	●		●
SERIF 003	1269	15	●		●
GOTHIC REGULAR CONDENSED	1270	15	●	●	●
GOTHIC REG. SUPER CONDENSED	1271	18	●		●
GOTHIC REG. SUPER CONDENSED	1272	18	●		●
GOTHIC 004	1272	18	●		●
GOTHIC 003	1273	18	●	●	
GOTHIC	1274	20	○		●
GOTHIC LIGHT SUPER CONDENSED	1275	20	●		
GOTHIC REGULAR	1275	20	○		
GOTHIC LIGHT SUPER CONDENSED	1276	24	●		
GOTHIC REG. SUPER CONDENSED	1277	24	●		●
GOTHIC REG. SUPER CONDENSED	1278	24	●		●
GOTHIC REGULAR CONDENSED	1279	30	●		
GOTHIC REGULAR CONDENSED	1280	30	●		
GOTHIC LIGHT SUPER CONDENSED	1281	30	●		●

