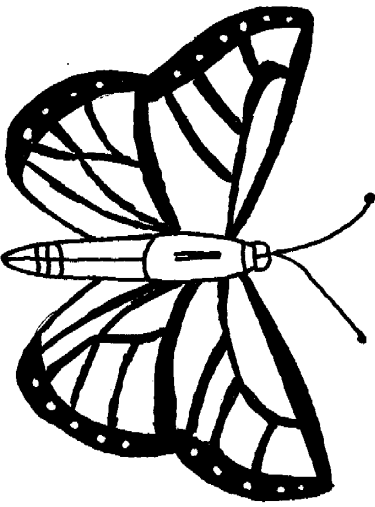
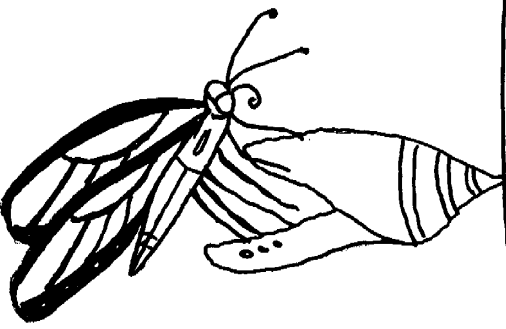
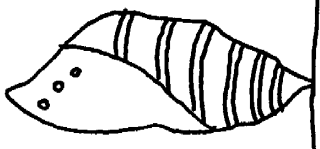
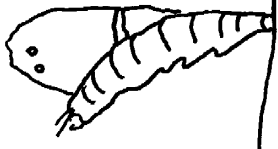
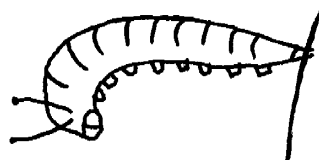


THE SPECIES INSIDE THE PUPA LEGS, WINGS, EYES + ALL THE PARTS OF THE ADULT BUTTERFLY ARE GROWING.



THE THIRD STAGE OF METAMORPHOSIS IS THE **PUPA** WHEN THE CATERPILLAR IS DONE GROWING IT ATTACHES TO A BRANCH. ITS SKIN SPLITS ONE MORE TIME AND BECOMES A PUPA. THE BUTTERFLY CAN STAY IN THE PUPA FOR TWO WEEKS OR UP TO TWO YEARS DEPENDING ON

THE LAST STAGE OF THE METAMORPHOSIS IS THE ADULT **BUTTERFLY**. WHEN THE BUTTERFLY IS READY, IT COMES OUT OF THE PUPA.

THE ADULT FEMALE BUTTERFLY LAYS EGGS AND STARTS THE CYCLE OF METAMORPHOSIS ALL OVER AGAIN.

THE JOB OF A CATERPILLAR IS TO EAT + EAT. AS THE CATERPILLAR GROWS IT SPLITS ITS SKIN ABOUT 4 TO 5 TIMES. CATERPILLARS CAN GROW 100 TIMES THEIR SIZE DURING THIS

THE NEXT STEP OF METAMORPHOSIS IS THE **CATERPILLAR** STAGE.

THE FIRST STEP OF METAMORPHOSIS IS THE **EGG**. BUTTERFLY EGGS ARE LAID ON LEAVES + CAN BE VERY SMALL.

ALL BUTTERFLIES GO THROUGH A PROCESS CALLED

METAMORPHOSIS.

METAMORPHOSIS MEANS TRANSFORMATION OR TO CHANGE SHAPE

